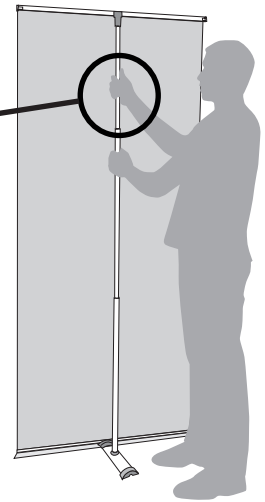
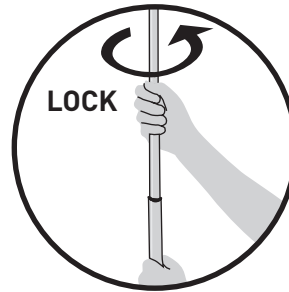
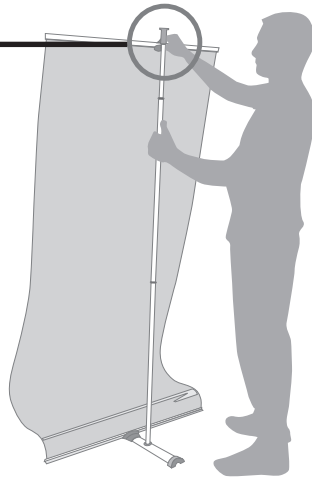
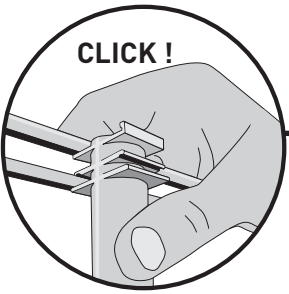
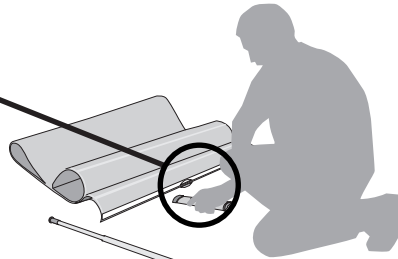
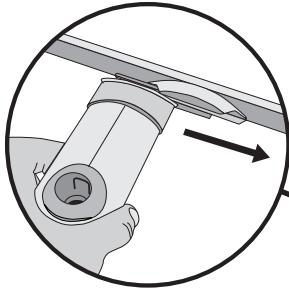


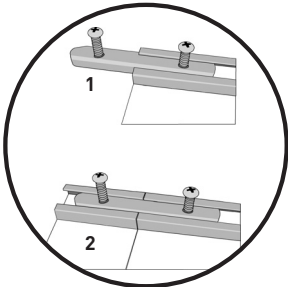
# Instrucciones de montaje

Instruções de montagem / Assembly instructions

## LiteBanner



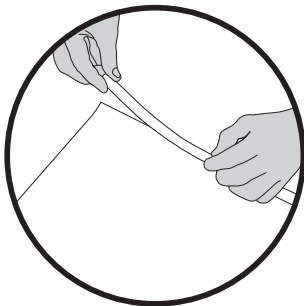
- Bloquea el mástil girando su parte superior hacia la derecha.
- Bloqueie o mastro girando a sua parte superior para a direita.
- Lock the upper pole turning right.



**CONECTOR**  
PARA FORMAR MURALES  
CONNECTOR TO BUILD MURALS

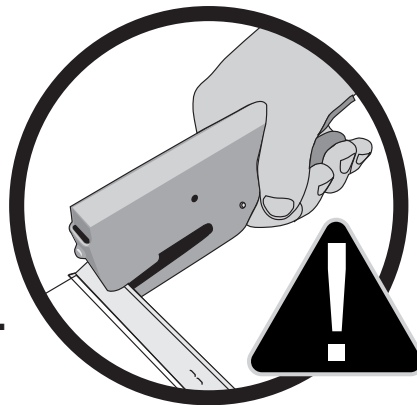
## Como colocar las impresiones

Colocar impressões / How to install your prints



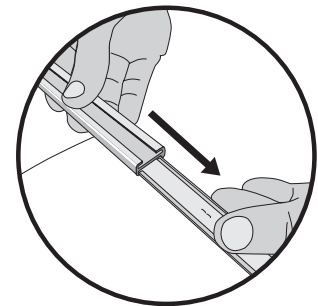
1.

- Posiciona el perfil plástico en la gráfica con la ayuda del adhesivo.
- Posicione o perfil plástico com a ajuda do adesivo.
- Place the adhesive strip on the back of your print.



2.

- Fíjalo con grapas cada 15cm.
- Fixe-o com agrafes de 15 em 15 cm.
- Fix it in several points with a stapler.



3.

- Desliza la gráfica en los perfiles de aluminio.
- Deslize a impressão nos perfis de alumínio.
- Slide it into the aluminium profile.